

Actuated Ball Valve Manual Override



General

- **Size:** 3/8"-2"
- **Material:** PVC
- **Standard Accessory:** Some Type 230-233 valves
- **Actuation:** Electric or pneumatic
- **Mounting:** GF valves and actuators only
- **Standard Pack Quantity:** 1 piece

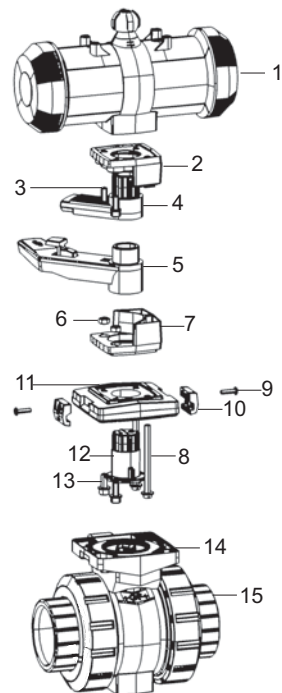
Ball Valve Compatibility

The *Type 230-233* Pneumatically Actuated Ball Valve and the *Type 288* Pneumatically Actuated Vertical 3-way Ball Valve families offer standard assemblies that include the declutchable manual override lever and one can be easily added to an existing assembly. *Type 104* and actuated *Type 523* Ball Valve assemblies are not compatible with the declutchable manual override lever. *Type 127* and *Type 179-184* Electrically Actuated Ball Valves sizes 1 1/4"-2" are compatible with a standard manual override lever of equal size but valves sizes 3/8"-1" require the manipulation of the manual override components by GF in order to make them compatible with the valve assembly. The porting configuration of any actuated horizontal 3-way ball valve needs to be checked against the physical limitations of the manual override lever before assembly. The manual override lever is restricted to use in one specific 90° quadrant of a valve's full 360° potential stroke because of the connection design. All pneumatically actuated 3-way valves and electrically actuated 3-way valves sizes 1 1/4"-2" assembled in the defined "standard" porting configuration are compatible with the standard manual override lever. All other assemblies require the manipulation of the manual override components for compatibility; please check with GF for assembly suggestions.

Sample Specification

GF's Actuated Ball Valve Manual Override shall be declutchable in design and utilized with a GF 5-Series Ball Valve. The operating stroke shall be 90 degrees. The drive connections shall be GF specific spline patterns. The lever shall re-engage the actuator if the actuator is fully cycled. The lever assembly shall rotate with the actuator. All manual overrides shall be manufactured under ISO9001 for Quality and ISO14001 for Environmental Management.

Components



Assembly Components

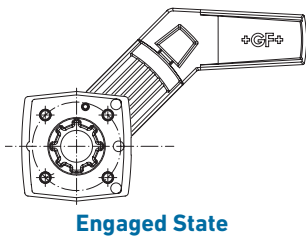
Part	Description	Material
1	Actuator	Glass-filled PP
2	MO top mount	Glass-filled PP
3	MO short actuator bolt	304 Stainless steel
4	MO actuator engaged lever	PVC
5	MO valve declutchable lever	PVC
6	MO bottom mount nut	304 Stainless steel
7	MO bottom mount	Glass-filled PP
8	MO long actuator bolt	304 Stainless steel
9	Intermediate kit bracket bolt	304 Stainless steel
10	Intermediate kit bracket	Glass-filled PP
11	Intermediate kit base	Glass-filled PP
12	Intermediate kit drive bushing	Glass-filled PP
13	Intermediate kit bolt	304 Stainless steel
14	Multifunction module	Glass-filled PP
15	Type 546 Ball Valve	PVC, CPVC, PP, ABS, PVDF

Components 2-8 inclusive with manual override unit.

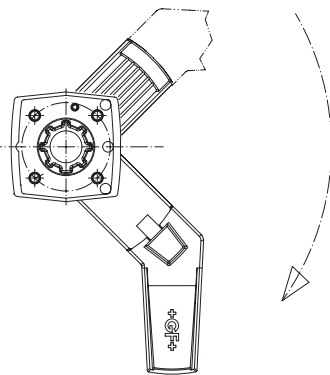
Function

The declutchable manual override utilizes two levers. One is permanently engaged with the actuator and the other is permanently engaged with the valve. When a manual override is required, the user can operate the valve with the declutchable lever regardless of the actuator's state.

If the manual override is left in the declutched state, the two levers will automatically reengage when the actuator is returned to the same relative position as the valve to reestablish the valve's actuated function.

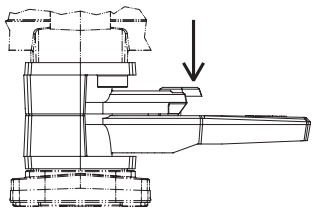


Engaged State

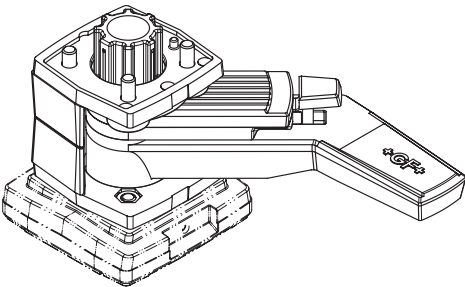


Declutched State

Pressing down on the declutch tab (shown at right) will disengage the two levers.



This declutchable manual override is ONLY compatible with GF valves and actuators. The spline connection to the actuator is designed to be used with PA11/21 pneumatic actuators and EA15/25 electric actuators. The base mount is not symmetric and can only be mounted to GF intermediate kits.



Dimensions

The following dimensions are shown in millimeters unless otherwise specified

